

LED FIXTURE

DL Series



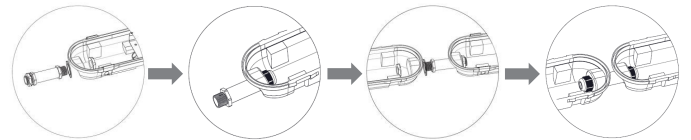
LED Vapor Tight DL-VT4X (NEMA 4X)

Linear, IP66 NEMA 4X rated luminaire



5-year limited warranty

Operating temperature range -40° C ~ +55° C



Wiring Connector: DL-VT4X/TWC

Features & Benefits

- cUL listed, DLC
- IP 66 rated NEMA 4X, NSF certified, wet location rated
- High impact composite grey housing, IK08
- High impact diffuser 5VA IK08, frosted lens
- 120-347V auto-sensing driver, 130lm/W, 0-10V dimming
- Stainless steel clips and stainless steel mounting brackets included
- c/w PG13.5 threaded cable gland
- Optional microwave motion sensor, emergency battery

Dimensional Drawing



	L	W	H
2FT	24"	4.0"	3.3"
4FT	48"	4.0"	3.3"
8FT	96"	4.0"	3.3"

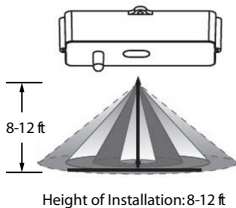
Ordering Information Example: DL-VT4X/4F/40W/40/120-347V/D

Family Name	Fixture Type	Size	Wattage	CCT	Voltage	Dimmable	Options
DL (Deltalum)	VT4X (Vapor tight 4X NSF)	2F (2') 4F (4') 8F (8')	24W 40W 66W	40 (4000K) 50 (5000K)	120-347V	D (0-10V Dimming)	S (Microwave sensor, factory installed) EM (Emergency battery, factory installed)

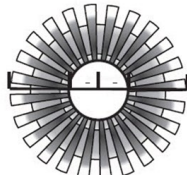
Product Specification

Ordering Code	DLC	Model Number	Wattage (W)	Input Voltage (V)	Hour Rating (L70)	Beam Angle	Initial Delivered Lumens (lumen)	CCT (K)	CRI	Wet Location	M.O.L (inch)	Case QTY.
3665300	Yes	DL-VT4X/4F/40W/40/120-347V/D	40W	120-347V	50,000	120°	5200	4000	>80	Yes	48	1
3665301	Yes	DL-VT4X/4F/40W/50/120-347V/D	40W	120-347V	50,000	120°	5200	5000	>80	Yes	48	1
3664301	Yes	DL-VT4X/2F/24W/40/120-347V/D	24W	120-347V	50,000	120°	3100	4000	>80	Yes	24	1
3664302	Yes	DL-VT4X/2F/24W/50/120-347V/D	24W	120-347V	50,000	120°	3100	5000	>80	Yes	24	1
3666313	-	DL-VT4X/8F/66W/40/120-347V/D	66W	120-347V	50,000	120°	8500	4000	>80	Yes	96	1
3666314	-	DL-VT4X/8F/66W/50/120-347V/D	66W	120-347V	50,000	120°	8500	5000	>80	Yes	96	1
3660110	-	DL-VT4X/Remote	Hand held remote									
3660111	-	DL-VT4X/TWC	Tandem wiring connector									
-	-	S	Sensor (factory installed)									
-	-	EM	Emergency battery (factory installed)									

Motion Sensor



Max. 25ft
Min. 3ft



Detection Range
Height of installation: 8ft

Default Settings:
Motion: 100% lumen output
≥5min with no motion: 30% lumen output
≥60min with no motion: OFF

Sensor Remote

Maximum Operating Range: 33 feet

The following settings can be customized:

- Sensitivity for motion detection
- Hold Time
- Standby level 0/ 10/20/30 percent
- Standby time 24H/ 1M/ 30M/ 60M
- Level where the daylight sensor turn off the fixture

Default Settings:
Sensitivity 100%, Standby time 5min
Dimming level 30%
Dimming time 60min