

# LITETRONICS®

## HIGH INTENSITY DISCHARGE



## H. I. D. LIGHTING FEATURES & BENEFITS

### **Super Arc™ Metal Halide Lamps**

Super Arc Metal Halide lamps provide bright, white light. The 65-80 CRI helps bring out colors and textures, while improving visual acuity. Super Arc Metal Halide lamps, available in clear or with phosphor coating, have an average life of 10,000-20,000 hours. The compact arc size of Super Arc lamps improves the lamps' effectiveness, continuing the Litetronics tradition of producing the highest quality lamps available.

- 65-80 CRI
- 10,000 to 20,000-hour average life
- Reduced maintenance costs
- Energy efficient
- High lumen output
- Compact arc size
- Distributes light evenly

### **Super Arc™ High Pressure Sodium Lamps**

Litetronics Super Arc™ High Pressure Sodium (HPS) lamps are a superior, economical lighting choice in general enclosed fixture applications. HPS lamps are the most efficient lamps in the HID family of products. HPS lamps also have a shorter warm-up time than other HID's. They cast a golden white light that is perfect for illuminating streets and parking areas.

Super Arc HPS lamps have a 24,000-hour life. This means less lamp replacements are needed, which reduces labor costs. They are more efficient than incandescent, metal halide, and many fluorescent lamps. The long life and high lumen output puts Super Arc HPS lamps ahead of the competition.

- 24,000-hour average life
- Energy efficient
- Distributes light evenly
- Short warm-up time
- Reduces labor costs
- High lumen output

### **Pulse-Start Metal Halide Lamps**

While a standard metal halide lamp can lose up to 40% of its initial lumen level over the course of its life, the Litetronics Super Arc™ Pulse-Start Metal Halide lamp stays strong. Super Arc starts with a high lumen output and has superior lumen maintenance, reducing the amount of fixtures needed. Also, with a rated life of 20,000 hours, Pulse-Start lamps can last two times longer than competing metal halide lamps.

Many metal halide lamps have cool spots in the arc tube, where some of the mercury and halides do not vaporize. The uniquely shaped arc tube in Pulse-Start lamps eliminates any pockets where these cool spots may form. This ensures that all chemicals are available to generate light.

This efficient use of available materials allows Pulse-Start lamps to replace higher wattage lamps, which saves money on energy. Pulse-Start lamps also reduce color shift by up to 400K, reach full light quicker than standard lamps, and have lower restrike time. Get consistent life, lumens, color, and savings with Super Arc Pulse-Start Metal Halide Lamps.

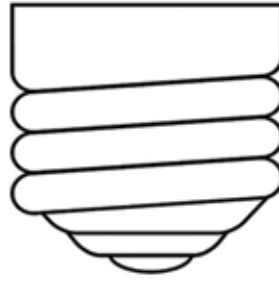
- 65-70 CRI
- 20,000-hour average life
- Reduced maintenance costs
- Unique arc shape eliminates cool spots
- Energy efficient
- High lumen output
- Compact arc size
- Distributes light evenly



## BASES

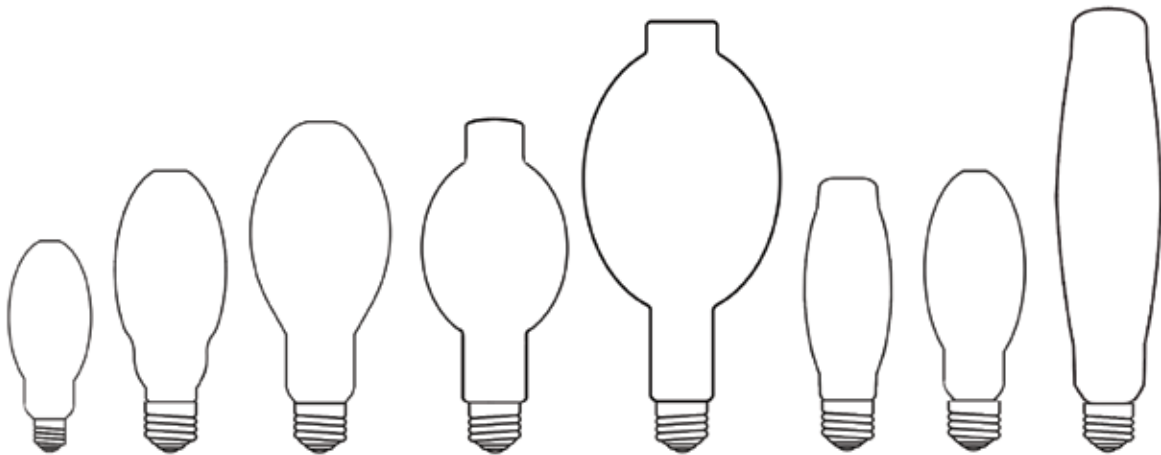


Medium  
(E26)



Mogul  
(E39)

## SHAPES



ED17

ED28

ED37

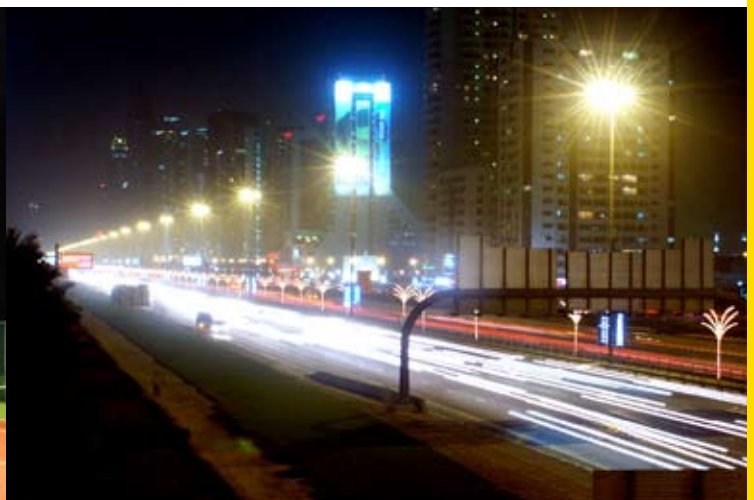
BT37

BT56

ED18

ED23½

ET25



# METAL HALIDE LAMPS

## Super Arc™ Metal Halide ED17 Lamps

ED17



### RATED LIFE

- 10,000 hours

### APPLICATIONS

- Sports Arenas
- Tennis Courts
- Billboard Signage
- Industrial Applications
- Canopy Lighting
- Car Dealerships
- Gas Stations

WATTS	BULB TYPE	BASE	DESCRIPTION	ORDERING CODE	QTY/ CASE	AVERAGE RATED LIFE	ANSI CODE	CRI	CORRELATED COLOR TEMP(K)	INITIAL LUMENS	M.O.L.**
50	ED17	MED	MH50 U CL MED	L-887	12	10,000	M110	70	4000	3,300	5-7/16"
70	ED17	MED	MH70 U CL MED	L-825	12	10,000	M98	75	4000	5,300	5-7/16"
100	ED17	MED	MH100 U CL MED	L-831	12	10,000	M90	75	4000	8,300	5-7/16"
175	ED17	MED	MH175 U CL MED	L-835	12	10,000	M57	65	4000	14,000	5-7/16"

## Super Arc™ Metal Halide ED28 Lamps

ED28



### RATED LIFE

- 12,000 hours

### APPLICATIONS

- Sports Arenas
- Tennis Courts
- Billboard Signage
- Industrial Applications
- Canopy Lighting
- Car Dealerships
- Gas Stations

WATTS	BULB TYPE	BASE	DESCRIPTION	ORDERING CODE	QTY/ CASE	AVERAGE RATED LIFE	ANSI CODE	CRI	CORRELATED COLOR TEMP(K)	INITIAL LUMENS	M.O.L.**
175	ED28	MOG	MH175 U CL MOG	L-830	12	12,000	M57	65	4000	14,000	8-5/16"
250	ED28	MOG	MH250 U CL MOG	L-845	12	12,000	M58	65	4000	21,000	8-5/16"

# METAL HALIDE LAMPS

## Super Arc™ Compact Metal Halide ED28/BT37 Lamps



### RATED LIFE

- 12,000-20,000 hours

### APPLICATIONS

- Sports Arenas
- Tennis Courts
- Billboard Signage
- Industrial Applications
- Canopy Lighting
- Car Dealerships
- Gas Stations

WATTS	BULB TYPE	BASE	DESCRIPTION	ORDERING CODE	QTY/ CASE	AVERAGE RATED LIFE	ANSI CODE	CRI	CORRELATED COLOR TEMP(K)	INITIAL LUMENS	M.O.L.**
400	ED28	MOG	MH400 U CL MOG R	L-855	12	20,000	M59	70	4000	36,000	8-5/16"
1000	BT37	MOG	MH1000 U CL MOG R	L-856	12	12,000	M47	65	4000	110,000	11-1/2"

## Super Arc™ Metal Halide ED37/BT56 Lamps



### RATED LIFE

- 12,000-20,000 hours

### APPLICATIONS

- Sports Arenas
- Tennis Courts
- Billboard Signage
- Industrial Applications
- Canopy Lighting
- Car Dealerships
- Gas Stations

WATTS	BULB TYPE	BASE	DESCRIPTION	ORDERING CODE	QTY/ CASE	AVERAGE RATED LIFE	ANSI CODE	CRI	CORRELATED COLOR TEMP(K)	INITIAL LUMENS	M.O.L.**
400	ED37	MOG	MH400 U CL MOG	L-850	12	20,000	M59	65	4000	36,000	11-1/2"
400	ED37	MOG	MH400 U CT MOG	L-860	12	20,000	M59	70	3700	36,000	11-1/2"
1000	BT56	MOG	MH1000 U CL MOG	L-870	4	12,000	M47	65	4000	110,000	15-3/8"

# METAL HALIDE LAMPS

## Super Arc™ Open Fixture ED17 Metal Halide Lamps

ED17



### RATED LIFE

• 20,000 hours

### APPLICATIONS

- Sports Arenas
- Tennis Courts
- Billboard Signage
- Industrial Applications
- Canopy Lighting
- Car Dealerships
- Gas Stations

WATTS	BULB TYPE	BASE	DESCRIPTION	ORDERING CODE	QTY/ CASE	AVERAGE RATED LIFE	ANSI CODE	CRI	CORRELATED COLOR TEMP(K)	INITIAL LUMENS	M.O.L.**
70	ED17	MED	MP70 U CL MED O	L-886	12	10,000	M98	75	4000	5,300	5-7/16"
100	ED17	MED	MP100 U CL MED O	L-885	12	10,000	M90	75	4000	8,300	5-7/16"
100	ED17	MED	MP100 U CT MED O	L-828	12	10,000	M90	80	3700	8,300	5-7/16"
150	ED17	MED	MP150 U CL MED O	L-884	12	10,000	M102	75	4000	12,000	5-7/16"

## Super Arc™ Open Fixture Metal Halide ED37 Lamp

ED37



### RATED LIFE

• 20,000 hours

### APPLICATIONS

- Sports Arenas
- Tennis Courts
- Billboard Signage
- Industrial Applications
- Canopy Lighting
- Car Dealerships
- Gas Stations

WATTS	BULB TYPE	BASE	DESCRIPTION	ORDERING CODE	QTY/ CASE	AVERAGE RATED LIFE	ANSI CODE	CRI	CORRELATED COLOR TEMP(K)	INITIAL LUMENS	M.O.L.**
400	ED37	MOG	MP400 BU CL MOG O	L-876	12	20,000	M59	65	4000	32,000	11-1/2"

# METAL HALIDE LAMPS

## PULSE-START Metal Halide ED28 Lamps

ED28



### RATED LIFE

- 20,000 hours

### APPLICATIONS

- Sports Arenas
- Tennis Courts
- Billboard Signage
- Industrial Applications
- Canopy Lighting
- Car Dealerships
- Gas Stations

WATTS	BULB TYPE	BASE	DESCRIPTION	ORDERING CODE	QTY/ CASE	AVERAGE RATED LIFE	ANSI CODE	CRI	CORRELATED COLOR TEMP(K)	INITIAL LUMENS	M.O.L.**
320	ED28	MOG	MHPS 320 CL U	L-714	12	20,000	M132/M154	65	4000	33,000	8-5/16"
320	ED28	MOG	MHPS 320 CT U	L-715	12	20,000	M132/M154	70	3700	31,000	8-5/16"

# HIGH PRESSURE SODIUM LAMPS

## Super Arc™ High Pressure Sodium ED37 Lamps

ED37



### RATED LIFE

- 24,000 hours

### APPLICATIONS

- Sports Arenas
- Tennis Courts
- Billboard Signage
- Industrial Applications
- Car Dealerships

WATTS	BULB TYPE	BASE	DESCRIPTION	ORDERING CODE	QTY/ CASE	AVERAGE RATED LIFE	ANSI CODE	CRI	CORRELATED COLOR TEMP(K)	INITIAL LUMENS	M.O.L.**
50	ED17	MED	LU50 E26	L-4108	12	24,000	S68	22	2100	4,000	5-7/16"
70	ED17	MED	LU70 E26	L-4111	12	24,000	S62	22	2100	6,300	5-7/16"
100	ED17	MED	LU100 E26	L-4114	12	24,000	S54	22	2100	9,500	5-7/16"
150	ED17	MED	LU150 E26	L-4117	12	24,000	S55	22	2100	15,000	5-7/16"

## Super Arc™ High Pressure Sodium ED23.5/ED18/ET25 Lamps



### RATED LIFE

- 24,000 hours

### APPLICATIONS

- Sports Arenas
- Tennis Courts
- Billboard Signage
- Industrial Applications
- Car Dealerships

WATTS	BULB TYPE	BASE	DESCRIPTION	ORDERING CODE	QTY/ CASE	AVERAGE RATED LIFE	ANSI CODE	CRI	CORRELATED COLOR TEMP(K)	INITIAL LUMENS	M.O.L.
150	ED23.5	MOG	LU150 E39	L-4116	12	24,000	S55	22	2100	16,000	7-1/2"
250	ED18	MOG	LU250 E39	L-4132	24	24,000	S50	22	2100	26,000	9-11/16"
400	ED18	MOG	LU400 E39	L-4133	24	24,000	S51	22	2100	50,000	9-11/16"
1000	ET25	MOG	LU1000 E39	L-4125	12	24,000	S52	22	2100	140,000	15-1/4"