

Xd24

MID-HIGH OUTPUT | 3-IN TRACKHEAD FIXTURE

SOLAIS®

PROJECT

NIKE

TYPE

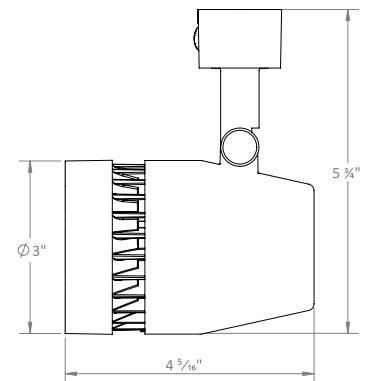
- / 120 V Standard; *277 V option available for ETL fixture
- / 50,000 Hours (L70)
- / Integrated driver
- / 355° rotation; 0-90° head tilt
- / UL Certified
- / RoHS-compliant
- / Dry location rating
- / Contains no lead or mercury
- / Power on/off switch on adapters
- / Fully dimmable; Compatability list available.
- / Designed for use with surface, pendant or trough mount
- / J-type, L-type, H-type, G-type*, Gx-type* (3-circuit), G2* (277v, 2-circuit)
- / VioLight and MonoWhite* color rendering enhancements available
- / * 90+ High CRI available for 27K and 30K. Consult factory for availability in other color temperatures. To order, replace 'K' in CCT designation with 'h' in code below



Ordering Information

Example: Xd24/25/30K/1850/WH/J/SN

Xd24	/	40	/	30K	/	1600	/	WH	/	J	/	
Fixture		Beam Spread		CCT / Lumens		Housing Color		Track Type		Options + Accessories		
Xd24		COB-optic		25K* / 1400		WH - White		J		277 V*		
		15c		27K / 1550		SV - Silver		L		TS - Tapered Snoot		
		25c		30K / 1600		BK - Black		H		HL - Honeycomb Louver		
		40c		30m* / 1600				G*		SL - Linear Spread		
				35K* / 1600				Gx*		SP - Prismatic Spread		
				35m* / 1600				G2* - 277		SS - Solite Spread		
				40K* / 1600						More Accessories Available		
		Multi-optic		27K / 1550								
		15		30K / 1600								
		25		35K* / 1600								
		40		40K* / 1600								
				27K / 1800								
				30K / 1850								
				30v / 1850								
				35K* / 1850								
				40K* / 1850								
				27K / 2300								
				30K / 2400								
				35K* / 2400								
				40K* / 2400								



Weight: 12.8 oz.

*Consult factory for lead time and availability

Note: VioLight, MonoWhite and High CRI products will produce up to 20% less measured lumens than their standard CCT equivalent; Although, VioLight product perceived lumens will be noticeably higher than their standard counterparts.

Xd24

MID-HIGH OUTPUT | 3-IN TRACKHEAD FIXTURE

SOLAIS[®]

PROJECT

NIKE

TYPE

Fixture Code				Power (Watts)	CBCP (cd)	Standard CRI		
Fixture	Beam Angle	CCT	Delivered Lumens					
Xd24	15c	25K*	1400	20	5642	82		
	25c				3758			
	40c				2157			
	15c	27K	1550		6255			
	25c				4166			
	40c				2391			
	15c	30K	1600		6448			
	25c				4295			
	40c				2465			
	15c	30m* 35m*	≈1600		6448	90		
	25c				4295			
	40c				2465			
	15	27K	1550	19	17590	85		
	25				5578			
	40				2395			
	15	30K	1600		18355			
	25				7405			
	40				2697			
	15	27K	1800	22	20296			
	25				6436			
	40				2763			
	15	30v*	≈1850		17799			
	25				5543			
	40				2856			
	15	30K	1850		20935			
	25				7675			
	40				2836			
	15	27K	2300		28		25979	
	25						8238	
	40						3537	
	15	30K	2400	27061				
	25			8581				
	40			3684				

WARNING: Not for use in fully enclosed luminaires. Risk of electric shock. Use in an indoor, dry location only. This device is not intended for use with emergency exit fixtures or emergency exit lights. May not be compatible with all dimmers; please visit solais.com/dimming for up-to-date dimmer compatibility information.

NOTES: This device complies with Part 15 of the FCC Rule. This product may cause interference with other devices. If interference occurs, change the locations of the products involved. **Compatible on 120v systems.**



Warranty



IES Files



Dimmers



Accessories



Luxiance utilizes active cooling to remove heat from the LED system - allowing Solais LED lamps to operate cooler, resulting in superior life, light output, and performance.



X-Changeable is our all-in-one technology that incorporates the optics, LEDs, driver and power within a replaceable module. This allows you to change the lumen output, color temperature, beam angle and trim color with ease.



Thermal Throttle – In the event that Solais products begin to overheat, they will undetectably dim unthemselves to protect your technology investments.



Violight radiates superior quality, enhancing colors in merchandise, making colors more vibrant and offering a truly competitive LED replacement for CMH-like crispness.