

# LED LAMP

HD Series



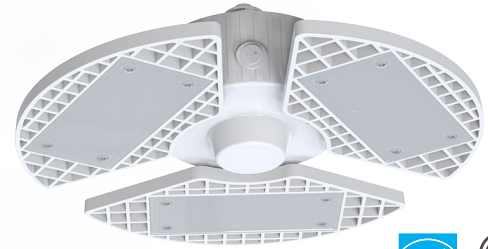
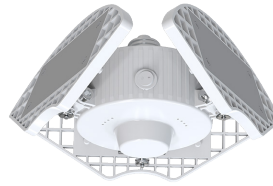
## LED Garage Light HD-GCL

Adjustable panel, multiple wattage offer  
E26 extended base option

5-year limited warranty

Operating temperature range -20 °C ~ +40 °C

HD-GCL/80W



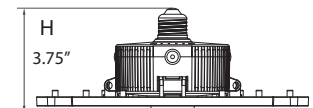
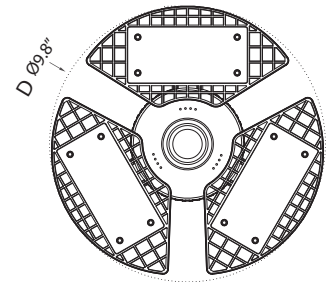
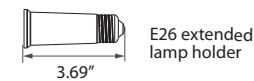
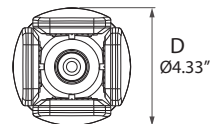
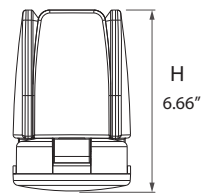
HD-GCL/MW



### Features & Benefits

- cETLus listed, damp location rated
- Indoor standard E26
- 90° adjustable panel design
- 100°-330° adjustable beam angle
- 120V, 5000K (Daylight)
- CRI≥80, L70 @ 50,000 Hrs
- 2 pcs per pack

### Dimensional Drawing



### Ordering Information Example: HD-GCL/80W/50/AB/E26/ES

Family Name	Lamp Type	Wattage	CCT (Kelvin)	Panel	Base	Certification
HD	GCL (LED garage light)	80W MW (Multi wattage)*	50 (5000K)	AB (Panel adjustable)	E26	ES (Energy Star)

\*Extended lamp holder included (for HD-GCL/MW)

### Product Specification

Ordering Code	Energy Star	Model Number	Wattage (W)	Input Voltage (V)	Hour Rating	Initial Delivered Lumens (lumen)	CCT (K)	CRI	Damp Location	Dimensions D×H (inch)	Case QTY.
1786500	-	HD-GCL/MW/50/AB/E26	60W-30W-6W	120V	50,000	6000lm-3000lm-600lm	5,000	80	Yes	4.33"×6.66"	12 (6 pack)
1786501	Y	HD-GCL/80W/50/AB/E26/ES	80W	120V	50,000	8000lm	5,000	80	Yes	9.8"×3.75"	12 (6 pack)