

Installation Instruction

LED Surface Discus

Applicable models:
 RGD-HS/4 (4"), RGD-HS/6 (6")
 RGD-HS/8 (8"), RGD-HS/11 (11")

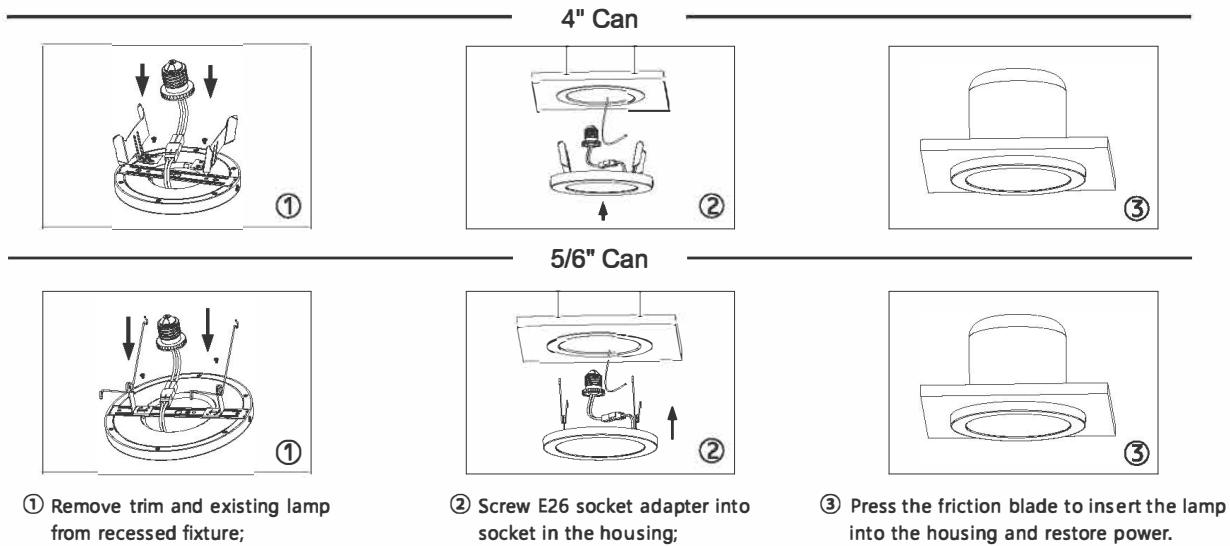
IMPORTANT SAFETY INFORMATION

- WARNING : RISK OF SHOCK** House electric current can cause painful shock or serious injury unless handled properly. For your safety, always remember to :
 - A : Turn off the power supply at the fuse or circuit breaker box before you install the fixture.
 - B : Ground the fixture to avoid potential electric shocks and to ensure reliable starting.
 - C : Double-check all connections to be sure they are tight and correct.
 - D : Wear rubber soled shoes and work on a sturdy wooden ladder.
- This fixture is designed for use in a circuit protected by a fuse or circuit breaker. It is also designed to be installed in accordance with local electrical codes. If you are unsure about your wiring, consult a qualified electrician or local electrical inspector, and check your local electrical code.
- WARNING : RISK OF CUTS** Some metal parts in the fixture may have sharp edges. To prevent cuts and scrapes, wear gloves when handling the parts.
- Account for small parts and destroy packing material, as these may be hazardous to children.

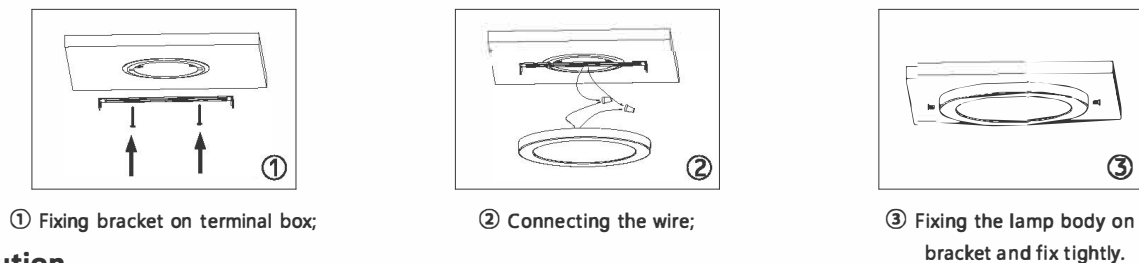
Product Specification

| Size | Wattage (W) | Voltage (V) | Rated Input Frequency (Hz) | Dimension (DxH) |
|--------|-------------|-------------|----------------------------|-----------------|
| 5 in. | 6W | AC120V | 50/60Hz | 139 x15mm |
| 6 in. | 12W | | | 164 x15mm |
| 8 in. | 18W | | | 217 x15mm |
| 11 in. | 24W | | | 291 x15mm |

Embedded in installation



Surface mounting installation



Caution

- WARNING : Risk of fire.** Use AC120 50/60Hz circuits.
- Suitable for damp locations. Before installing your lighting fixture, thoroughly review enclosed installation manual. If you do not have sufficient electrical wiring experience, please refer to a do-it-yourself wiring handbook or have your fixture installed by a qualified licensed electrician. All electrical connections must be in accordance with local and National Electrical Code(NEC) standards. Reliable operating temperature is -20 to +40 degrees Celsius(-4 to +104 degrees Fahrenheit).
- Do not obey fire prevention regulations, do not cover the fixture with any heat insulated materials.
- Do not change the LED light source or driver inside under any circumstance.
- Suitable for most dimmers, please visit www.turolight.com to find up-to-date dimmers compatibility and appropriate use information.

Warranty: 5 years warranty  This product is for indoor use only  For use with dimmers