

# Installation Instruction

## LED Surface Discus

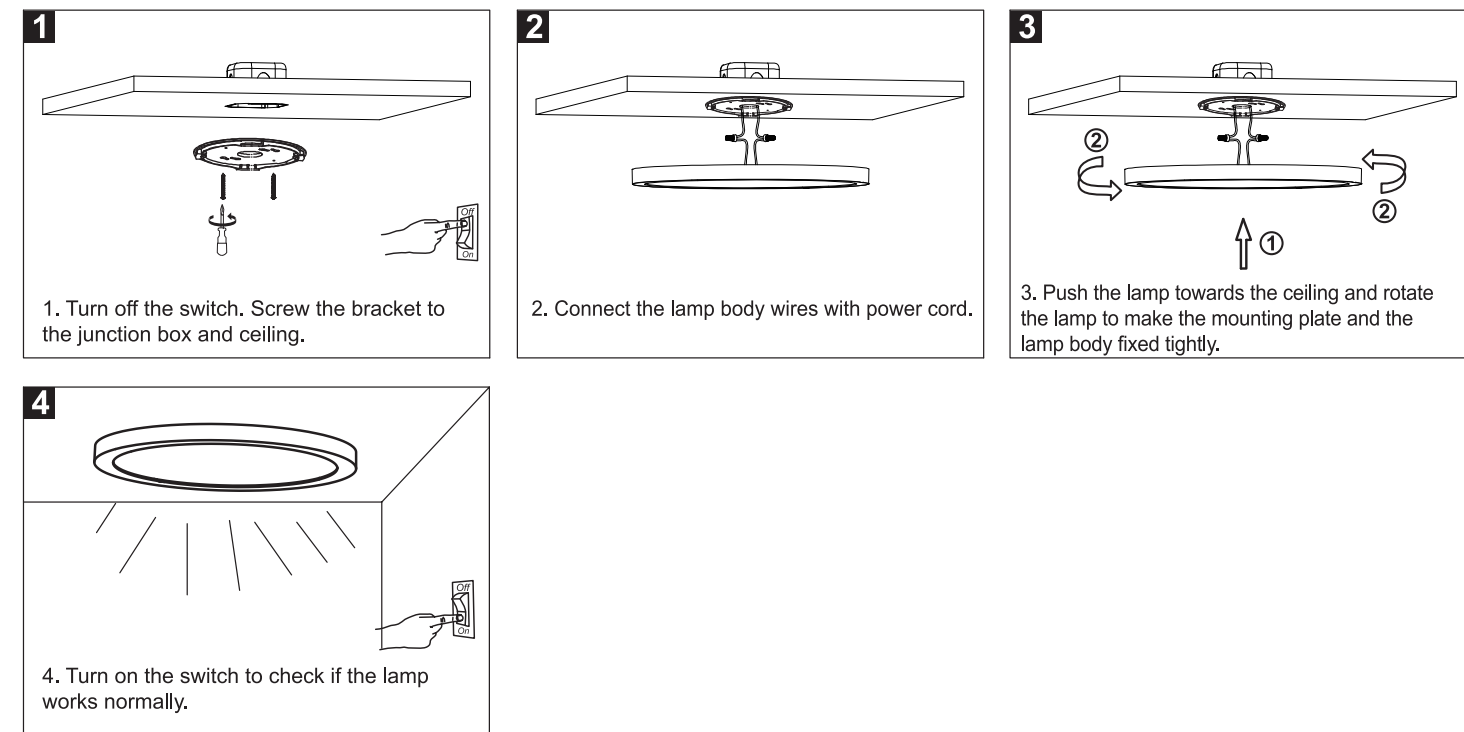
Applicable models:  
EDA-HS

- WARNING : RISK OF SHOCK** House electric current can cause painful shock or serious injury unless handled properly. For your safety, always remember to :  
A : Turn off the power supply at the fuse or circuit breaker box before you install the fixture.  
B : Double-check all connections to be sure they are tight and correct.
- This fixture is designed for use in a circuit protected by a fuse or circuit breaker. It is also designed to be installed in accordance with local electrical codes. If you are unsure about your wiring, consult a qualified electrician or local electrical inspector, and check your local electrical code.
- WARNING : RISK OF CUTS** Some metal parts in the fixture may have sharp edges. To prevent cuts and scrapes, wear gloves when handling the parts.
- Account for small parts and destroy packing material, as these may be hazardous to children.
- The light source contained in this luminaire shall only be replaced by the manufacturer or his service agent or a similar qualified person.
- Terminal block and the suspending accessories is not included. Installation must be performed by a qualified person.

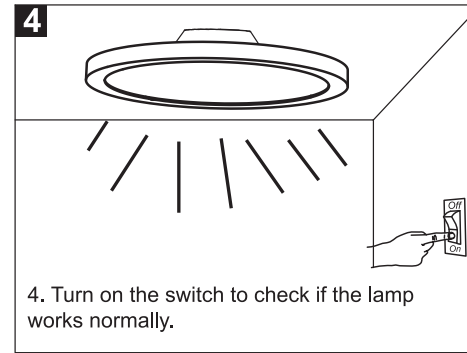
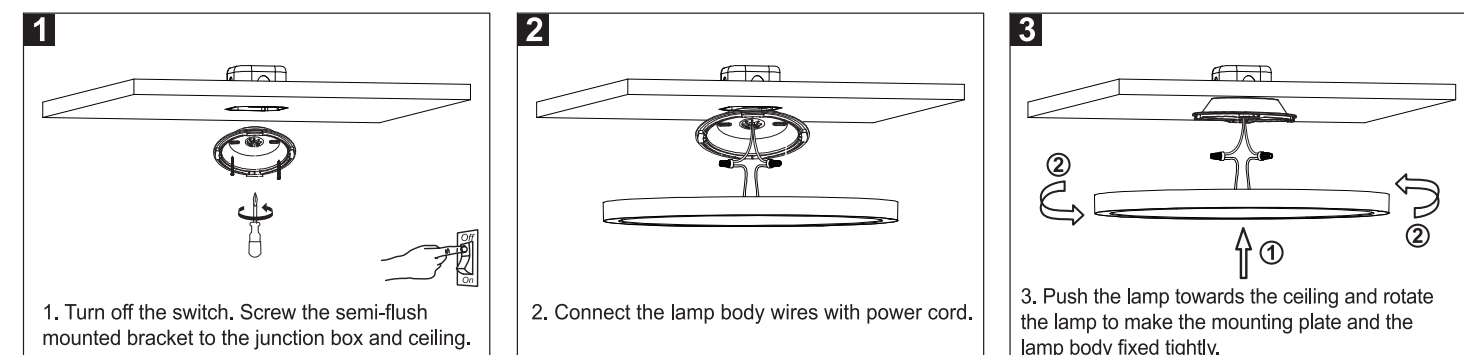
## Product Specification

Wattage (W)	Voltage (V)	Rated Input Frequency (Hz)	Beam Angle (°)	Dimension (DxH)
10W	AC120-277V	50/60Hz	120	8 x 0.95 inch
15W				12 x 0.95 inch
25W				16 x 0.95 inch
40W				24 x 0.95 inch

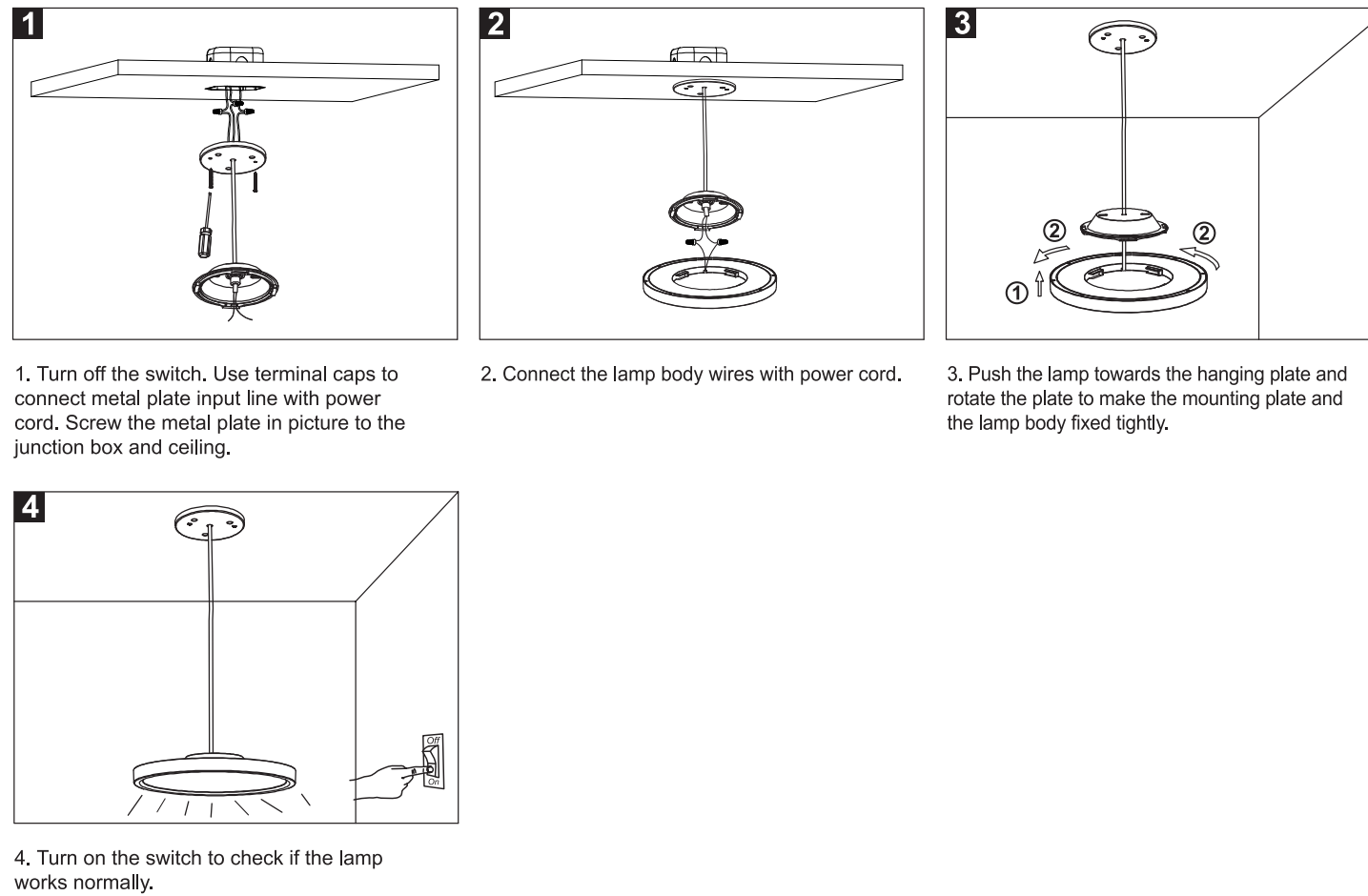
## Surface Mounted Installation



## Semi-Flush Mounted Installation



## Suspending Installation



## Caution

- WARNING : Risk of fire.**
- Before installing your lighting fixture, thoroughly review enclosed installation manual. If you do not have sufficient electrical wiring experience, please refer to a do-it-yourself wiring handbook or have your fixture installed by a qualified licensed electrician. All electrical connections must be in accordance with local standards. Reliable operating temperature is -20 to +40 degrees.
- pls obey fire prevention regulations, do not cover the fixture with any heat insulated materials.
- Do not change the LED light source or driver inside under any circumstance.

**Warranty:** 5 years warranty  This product is for indoor use only  For use with dimmers

**TUROLIGHT**

Tel: 905-479-7093  
Toll Free: 1-888-425-7093

Email: sales@turolight.com  
Website: www.turolight.com

12/15/23