

Installation Instruction

Applicable models:
FIT-CYL/PEND/GU10

Pendant Light Fixture

WARNING

- 1.Be sure the electricity to the wires you are working on is shut of; either the fuse is removed or the circuit breaker is turned off. Turning the power off using the light switch is not sufficient to prevent electrical shock.
- 2. Do NOT install or use the light fixture if any part is missing or damaged. Contact your dealer for replacement or missing parts.
- 3. For use with ceiling mounted only.

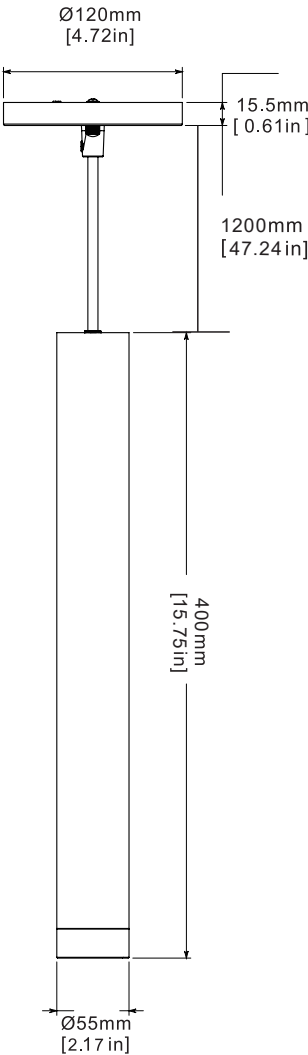
CAUTION

HOT SURFACE! Theluminaire is hot when the power is on, wait at least 5min to touch it after the power is off.

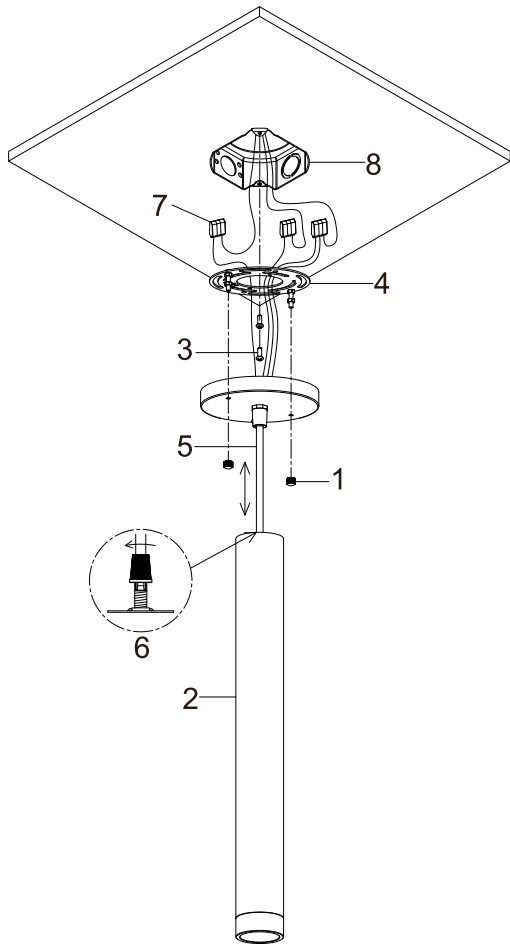
SPECIFICATIONS

Voltage	wire length	Frequency	Bulb Base	Wattage	Type
120V	1200mm(47.24in)	60Hz	GU10	MAX 50W	Surface mounted

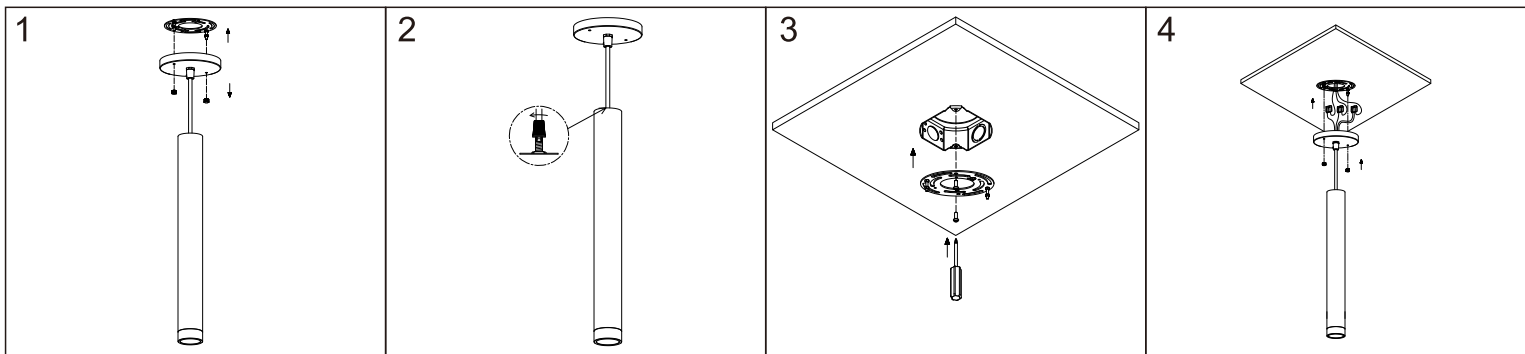
DIMENSION



INSTALLATION DIAGRAM



1. Nut
2. The lighting housing
3. Mounting screws
4. Mounting plate
5. Suspension wire
6. Hand twist lock wire sleeve
(The length of the suspension wire is 40-52 inch after stretching up and down)
7. Terminal blocks
8. Gossip box



Step 1: Unscrew the two nuts, and then remove them from the lighting housing and mounting plate. Adjust the length of suspension wire by manually screwing the locking sleeve. The length range is 40-52inch.

Step 2: Use mounting screws to lock mounting plate on the corresponding position of gossip box.

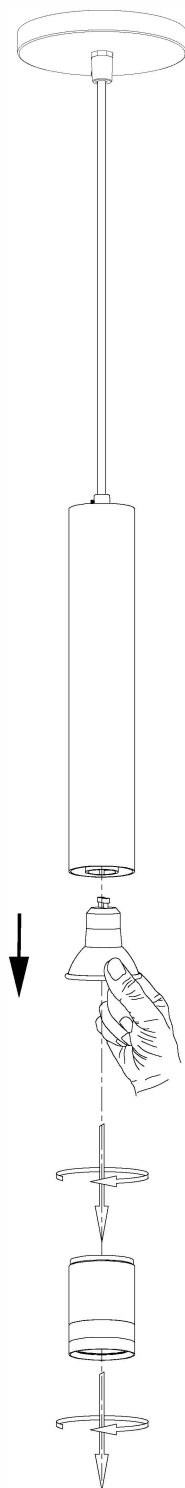
Step 3: Connect the live wire, zero wire and ground wire in the gossip box with the corresponding wiring terminal of the lamp.

Step 4: Put the lighting housing back on the corresponding position of the mounting plate, and tighten it with two nuts to complete the installation of the lamp

Remark: The wire will be curly. Because the bundled package will be deformed, which is normal. It will be straightened after hanging for several days. This integrated LED Fixture has no lamp/bulb to replace.

REPLACE THE LIGHT BULB

Remove the light bulb



Install the light bulb

