

# Installation Instruction

## NEBULUM 4" Recessed Downlight

Applicable models:  
**NBLM4-RM**  
NBML 4" Remodel / Retrofit Installation. Non-IC

### ELECTRICAL SHOCK HAZARD



#### WARNING

Disconnect the Electrical supply at the service panel (fuse or circuit breaker box). Failure to do so could result in serious injury.

Only qualified electricians should install this luminaire and Must conform to the Canadian Electrical Code Part 1 or the NEC, and any local codes and ordinances. Ensure that only proper tools and materials to complete the installation are available prior to attempting to install this luminaire.

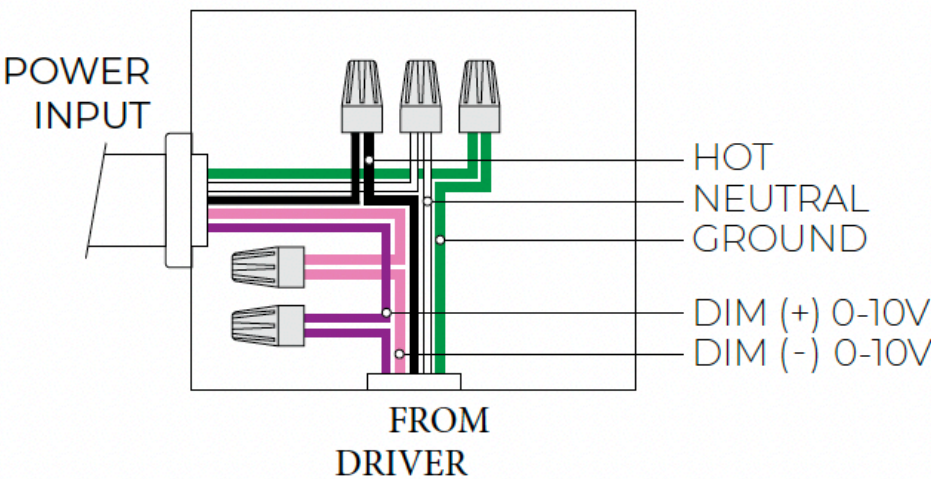
Read all instructions prior to installing this product.

This unit is intended as a Recessed Open Frame installation NON-IC.

Follow directions closely. Wattage selection for MW units is located inside the wiring compartments (see below). TORX T10 and T20 screw drivers are required for Light Engine installation

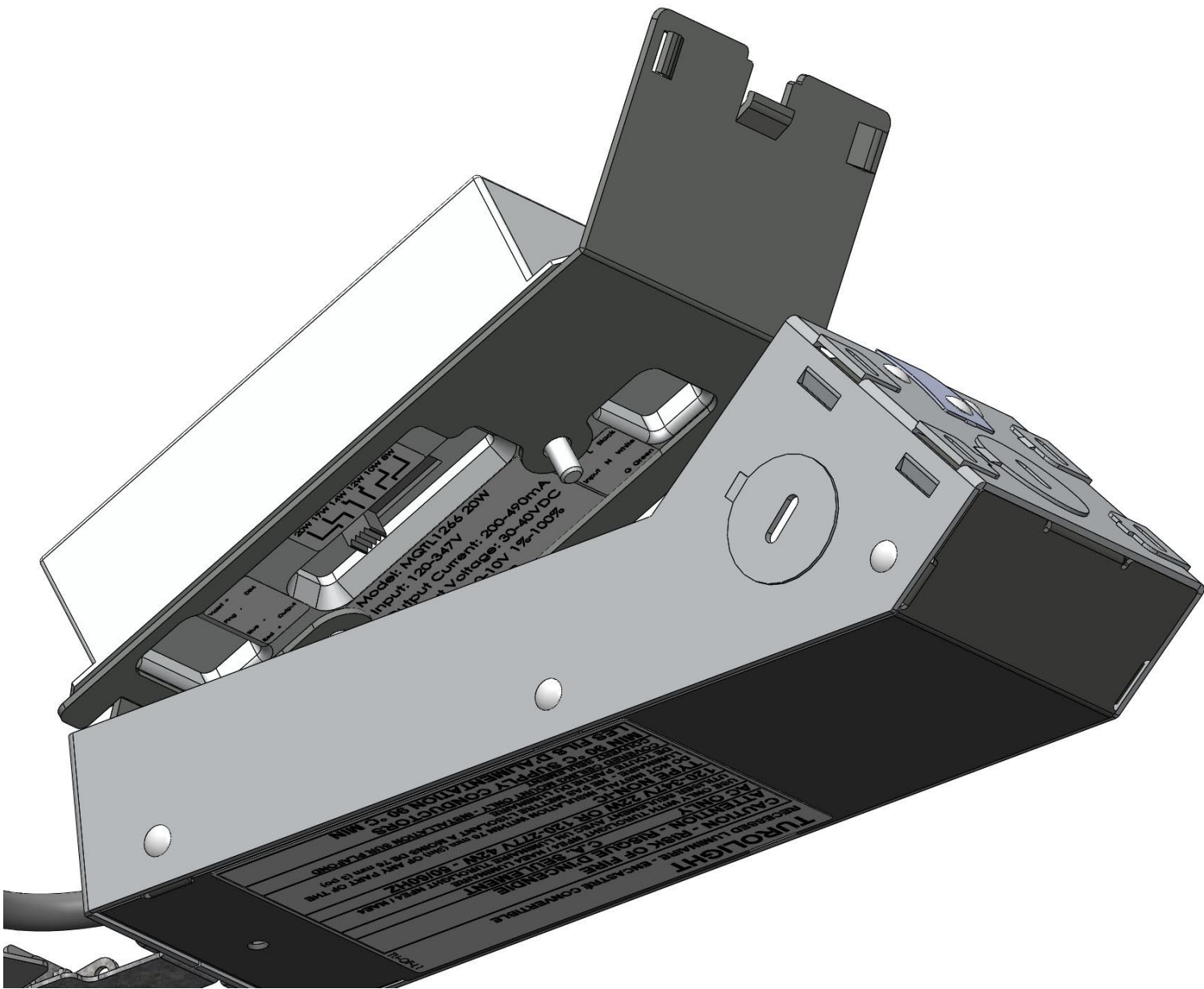


BLACK	HOT
WHITE	NEUTRAL
GREEN	GROUND
PURPLE	DIM (+) 0-10V
PINK	DIM (-) 0-10V

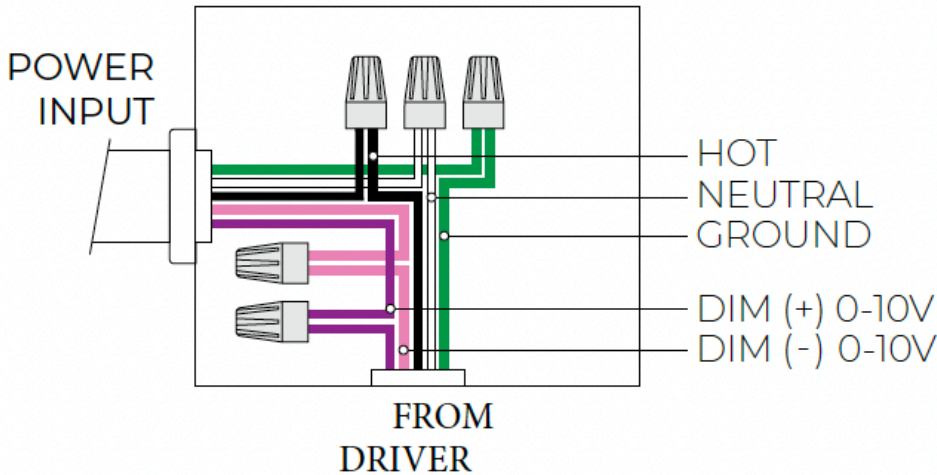


Nebulum 4 Recessed Fixtures - Retrofit/Remodel Unfinished ceiling installation  
NON-IC Rated

To access the wiring compartment, release the driver door cover and hinge open as shown below. For Wiring follow the wiring diagram below.



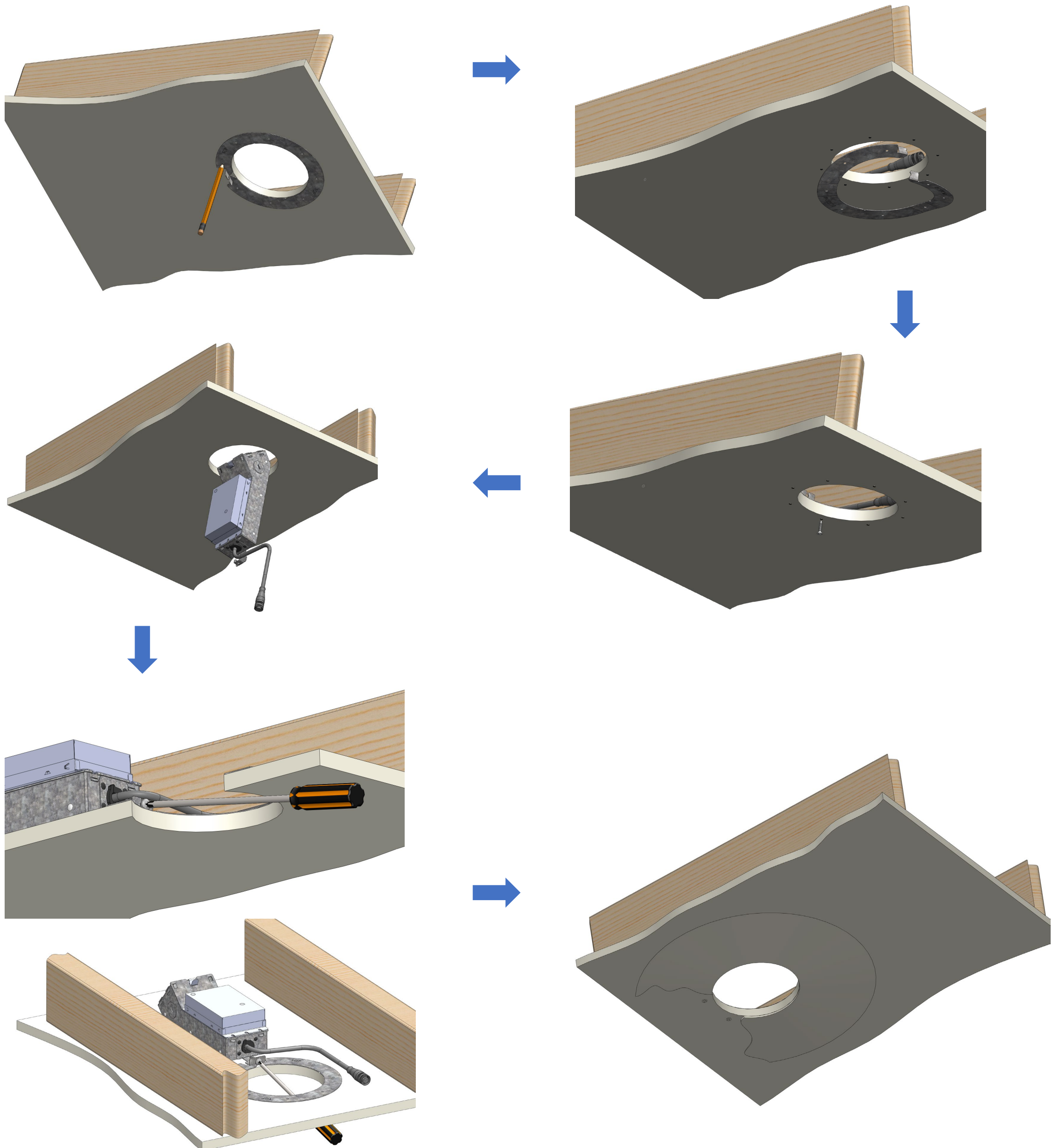
BLACK	HOT
WHITE	NEUTRAL
GREEN	GROUND
PURPLE	DIM (+) 0-10V
PINK	DIM (-) 0-10V





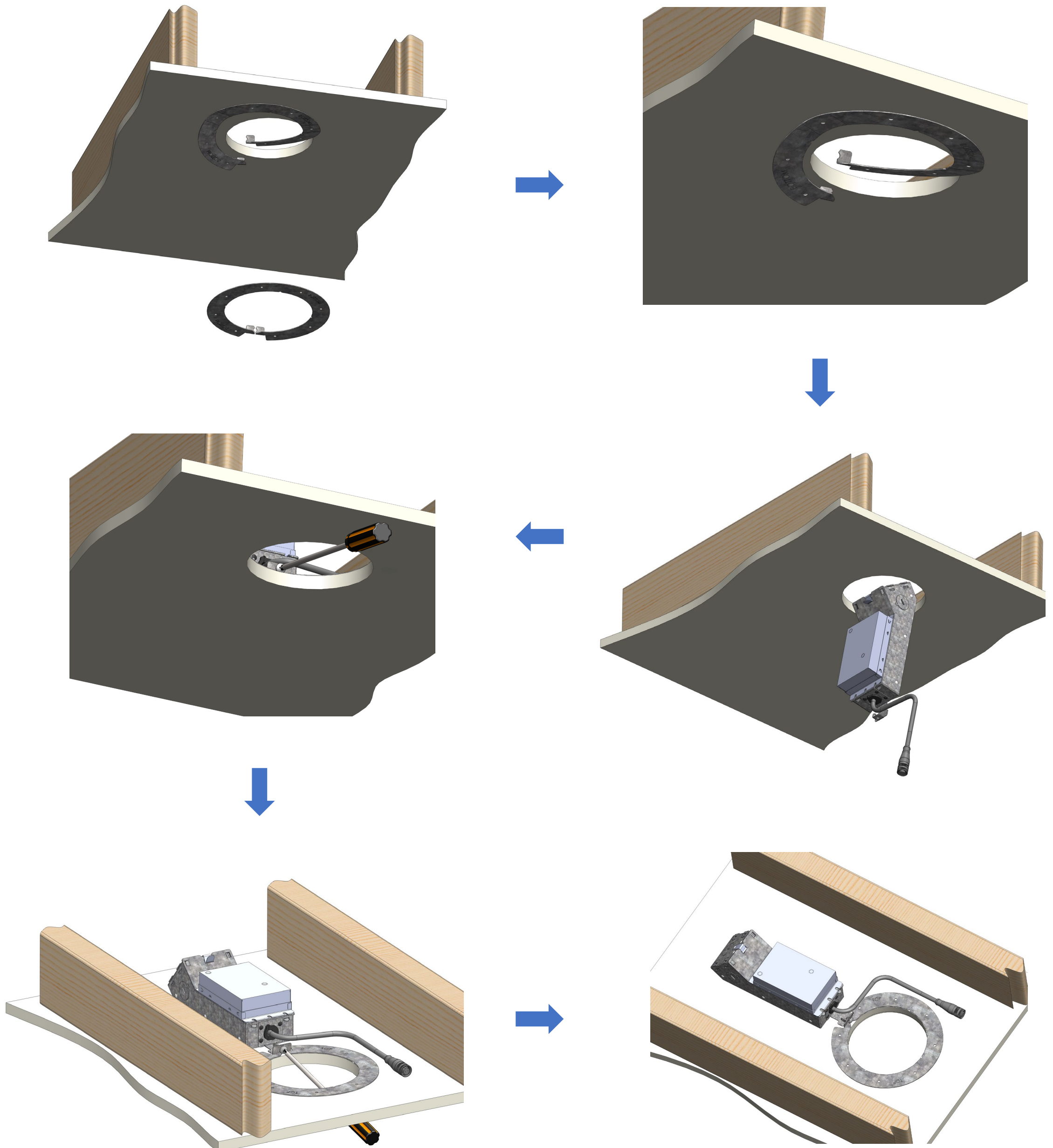
## Nebulum 4 Recessed Fixtures - Retrofit/Remodel Unfinished ceiling installation – NON-IC Rated

Install the retrofit ring and driver box following the pictorial steps below. (Electrical connections are not shown for simplicity). The Retrofit ring assembly can be fastened to the drywall as shown below.



## Nebulum 4 Recessed Fixtures - Retrofit/Remodel Finished ceiling installation NON-IC Rated

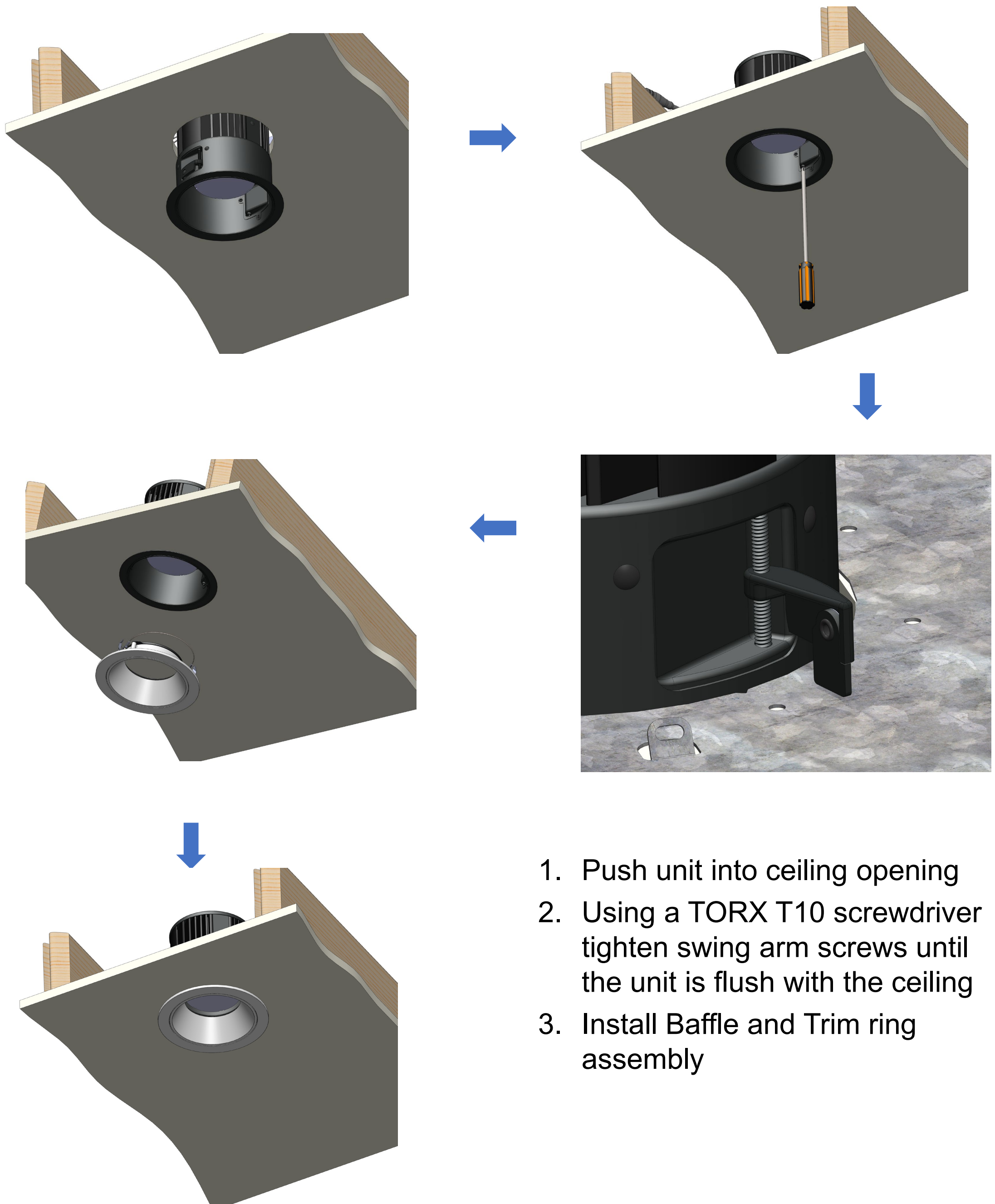
Install the retrofit ring and driver box following the pictorial steps below. (Electrical connections are not shown for simplicity)





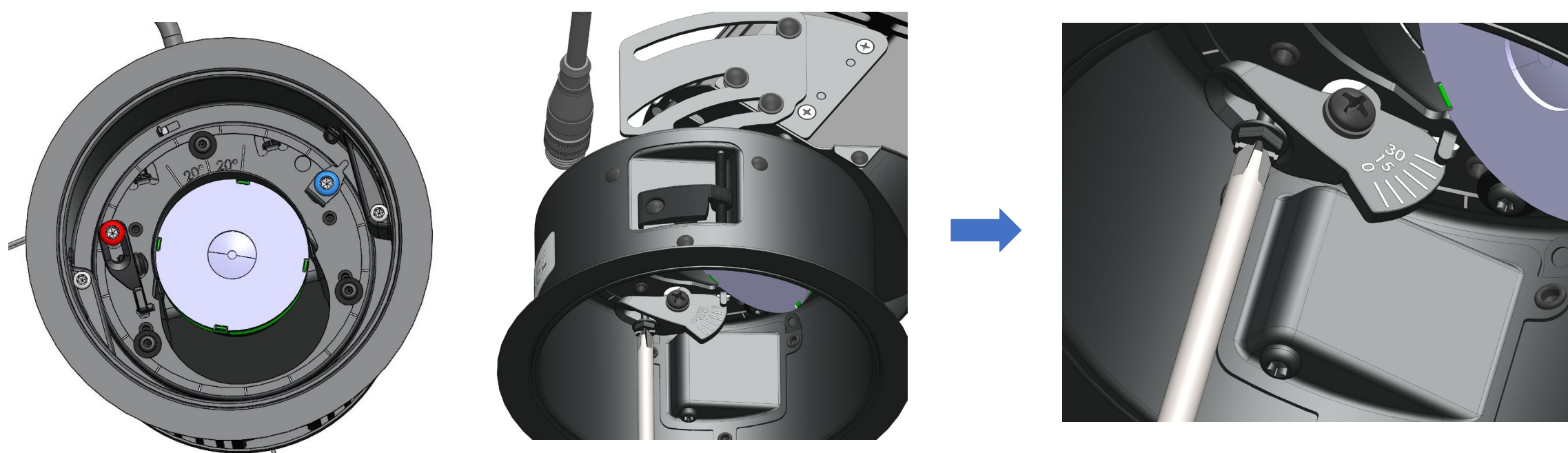
## Nebulum 4 Recessed Fixtures - LED Engine Assembly & Baffle installation

Install the LED Engine assembly following the pictorial steps below. (Electrical connections are not shown for simplicity). The Baffle/Trim ring assembly snaps into place



1. Push unit into ceiling opening
2. Using a TORX T10 screwdriver tighten swing arm screws until the unit is flush with the ceiling
3. Install Baffle and Trim ring assembly

## Nebulum 4 Recessed Fixtures - LED Adjustable Engine Aiming



To adjust the tilting angle, tighten or loosen the **RED** screw with a T20 TORX screwdriver to the desired aiming point. For rotation loosen the **BLUE** and adjust to the desired position.

