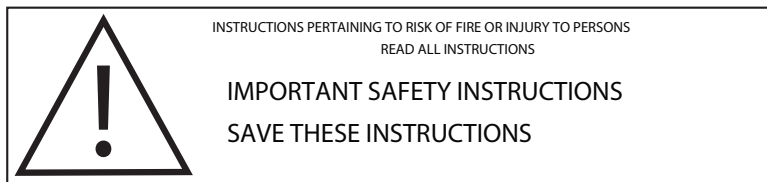


Installation Instruction

LED WALL SCONCE

Applicable models:
RGD-WS2/15W/MK9/D/2R/XX



TOOLS AND MATERIALS REQUIRED:



Phillips
Screwdriver



Wire Cutters



Pliers



Wrench

Wiring supplies
as required by
local electrical
code

IMPORTANT SAFETY INFORMATION:

Please read all the instructions below before installation.

* Make sure that the supply voltage corresponds to the rated product voltage.

* The product must be installed by a qualified electrician in accordance with the National Electrical Code and corresponding local codes.

*If the product is damaged, do not use it.

⚠ WARNING

RISK OF PERSONAL INJURY – READ and follow all WARNINGS and installation instructions.

Keep or give to the owner for future reference.

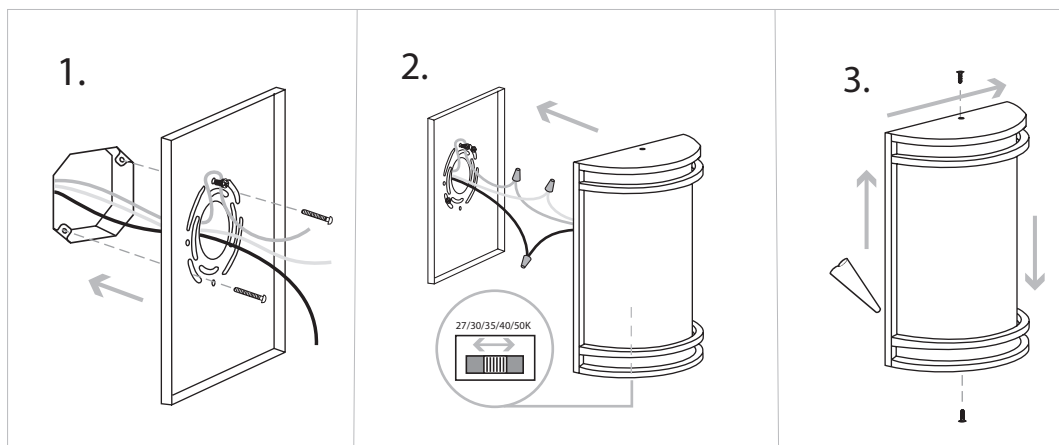
Risk of cuts: Wear gloves to prevent cuts or abrasions when removing from carton, handling, installing, and maintaining this product.

Risk of electric shock: This product must be installed in accordance with the code by a person familiar with the construction and operation of the product and the hazards involved.

Risk of Fire: Minimum 194°F supply conductors. Consult a qualified electrician ensure correct branch circuit conductor.

INSTALLATION

1. Pull the power supply wires out from the outlet box and mount the Wall plate to outlet box using Mounting screws.
2. Connect the wires: Black to Black, White to White, Green to Green. Secure the connection with Wire Nuts. Tuck all the wires back into the outlet box. Choose needed color temperature by adjusting the switch position.
3. Attach the Fixture back plate firmly to Wall plate and mount against the wall. Secure in place with Side mount screws. For Outdoor locations it is recommended to use silicone (not included) as shown on a picture.



Hardware Contents



Wire Connector X3



Headless Screw X2